

ARUA DISTRICT

SYNTHETIC MAP PROTECTION MAP RISK MAPS

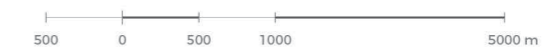
UGANDA, ARUA DISTRICT
SCALE 1: 500,000

EPSG projection 21096

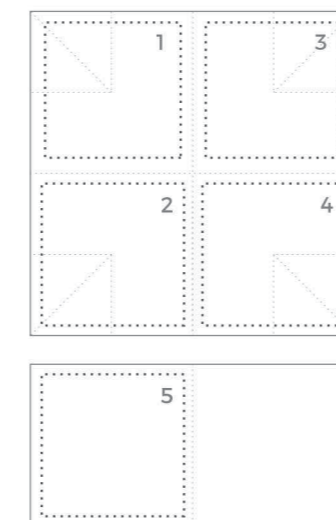
Datum Arc 1960
Spheroid Clarke 1880 (RGS)

DATA SOURCES

Uganda Bureau of Statistics, European Space Agency (ESA-ESRIN) World Fires Atlas Program (ATSR), Dartmouth Flood Observatory (DFO), UNEP/GRID-Geneva, The World Bank, Worldclim 2, DIMAQ 2014, © OpenStreetMap contributors 2017, GeoNames 2017

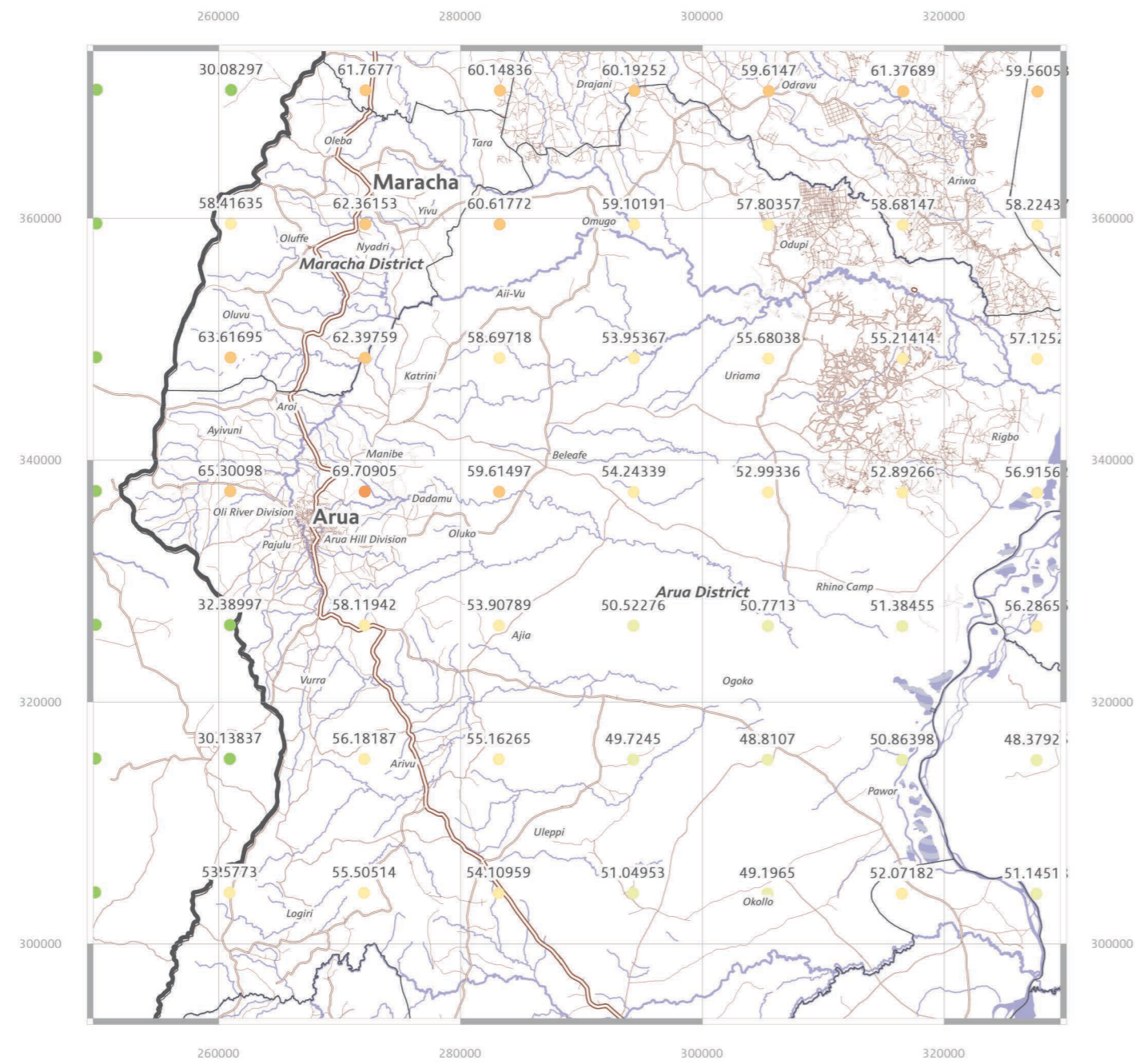


1. ARUA DISTRICT
Bounds 249610, 293831, 329610, 373831
FLOOD INUNDATION AREA AND POPULATION EXPOSURE
2. POPULATION EXPOSURE FOR LANDSLIDES TRIGGERED BY RAINFALL
3. FIRES AND SOLAR RADIANCE
4. POPULATION EXPOSURE FOR DROUGHT
5. ANNUAL AVERAGE PM2.5



Department of Architecture and Urban Studies
MSLab - Measure and Scale of Contemporary City
Antonella Contin
Alessandro Musetta

september 2017

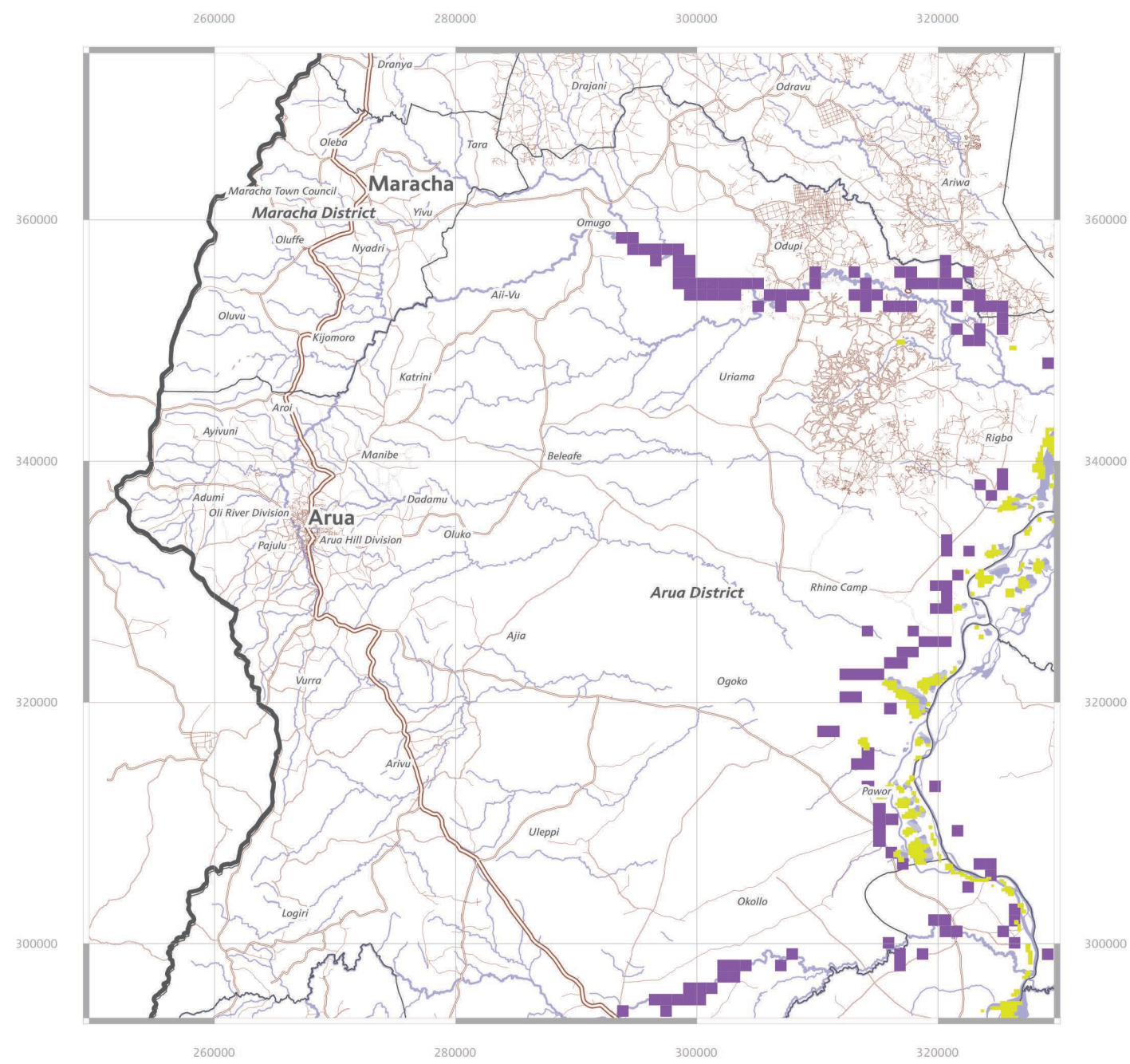


GLOBAL RISK FROM NATURAL HAZARDS

EXPOSURE

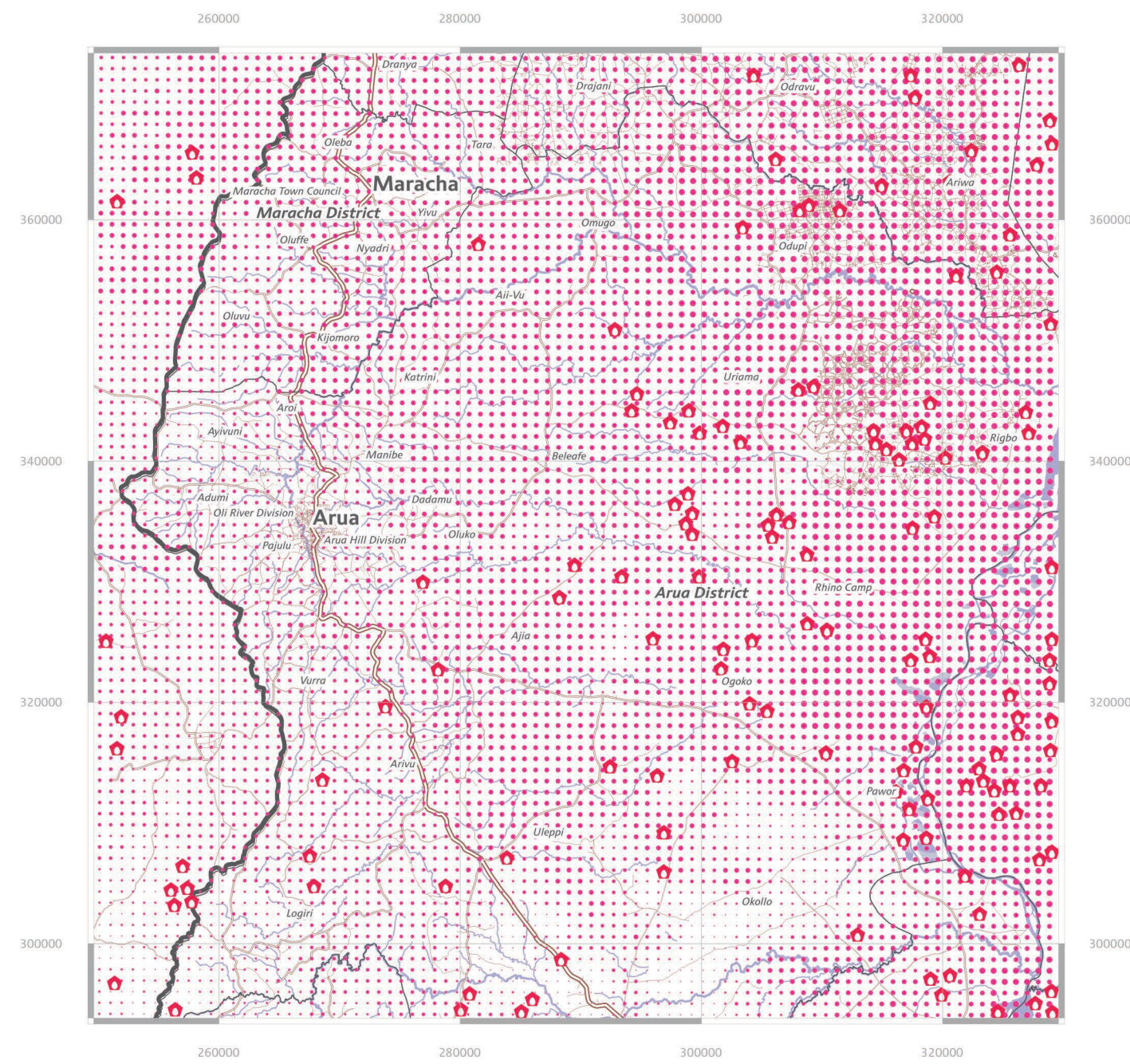


260000 280000 300000 320000
360000 340000 320000 300000
260000 280000 300000 320000



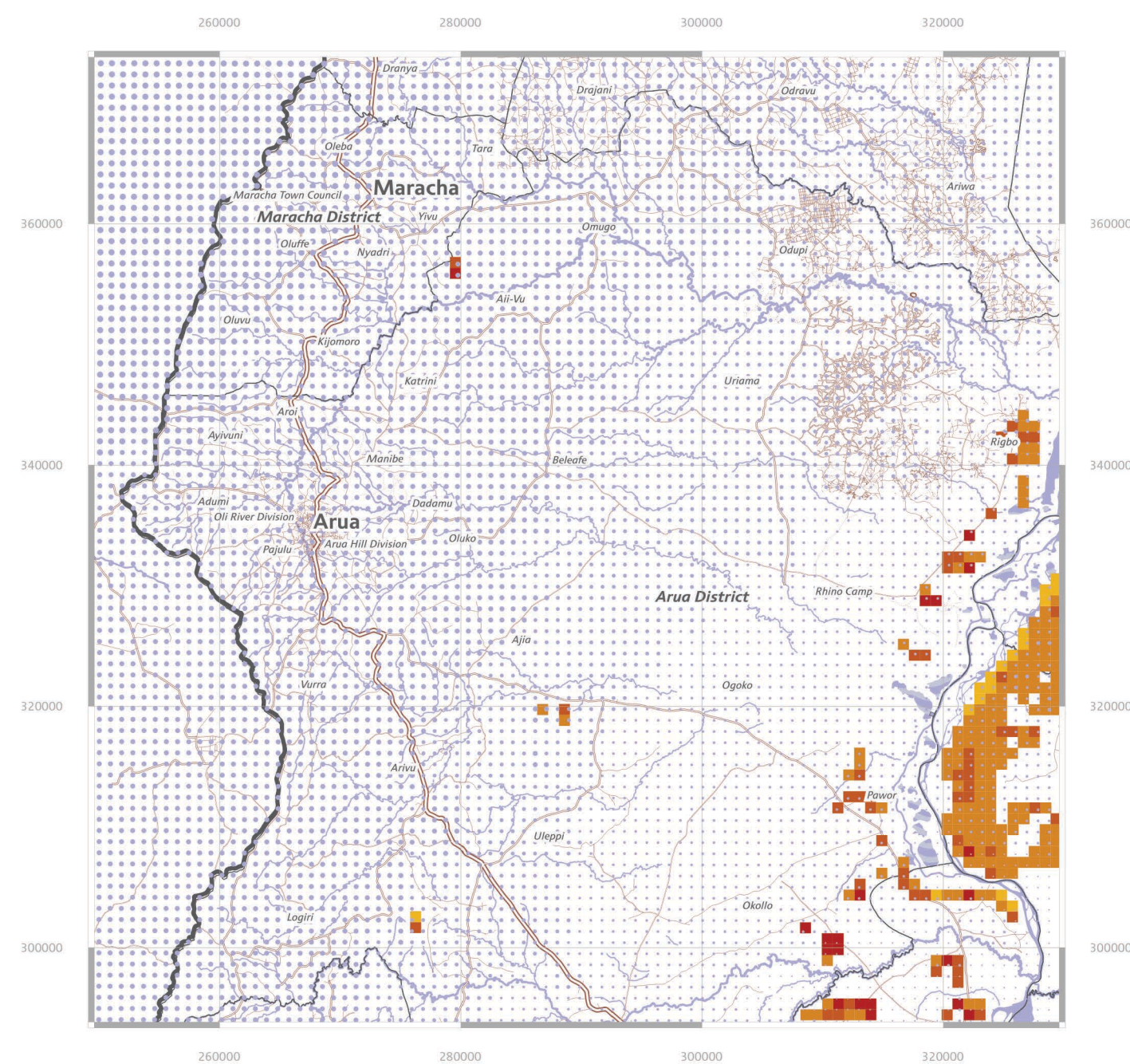
GLOBAL RISK FROM NATURAL HAZARDS EVENTS

- 1985-2016 FLOOD INUNDATION AREA
Dartmouth Flood Observatory (DFO)
- POPULATION EXPOSURE TO FLOOD
30 people / year
UNEP/GRID-Geneva



GLOBAL RISK FROM NATURAL HAZARDS EVENTS

- 1995-2012 FIRES
European Space Agency (ESA-ESRIN),
World Fires Atlas Program (ATSR)
- 1970-2000 SOLAR RADIANCE
Worldclim 2



GLOBAL RISK FROM NATURAL HAZARDS EXPOSURE

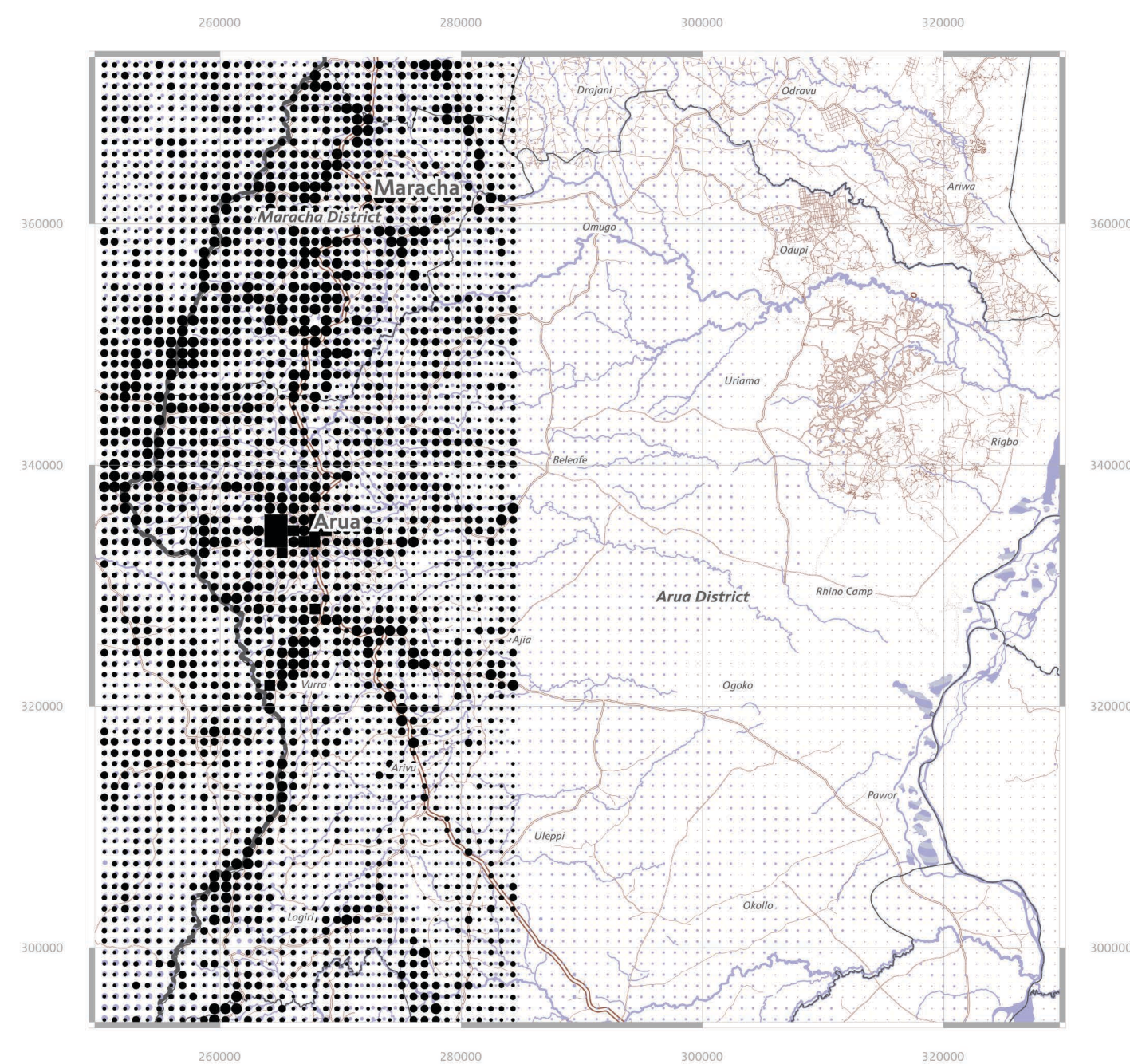


POPULATION EXPOSURE FOR LANDSLIDES TRIGGERED BY RAINFALL
people / year
UNEP/GRID-Geneva

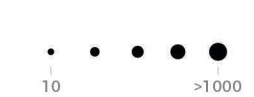


1970-2000 PRECIPITATION OF WETTEST QUARTER
BIO16 - Worldclim 2

<1,000 \$ / year
ECONOMICAL EXPOSURE FOR LANDSLIDES TRIGGERED BY RAINFALL
UNEP/GRID-Geneva



GLOBAL RISK FROM NATURAL HAZARDS EXPOSURE



POPULATION EXPOSURE FOR DROUGHT
people / year
UNEP/GRID-Geneva



1970-2000 PRECIPITATION OF DRIEST QUARTER
BIO17 - Worldclim 2